



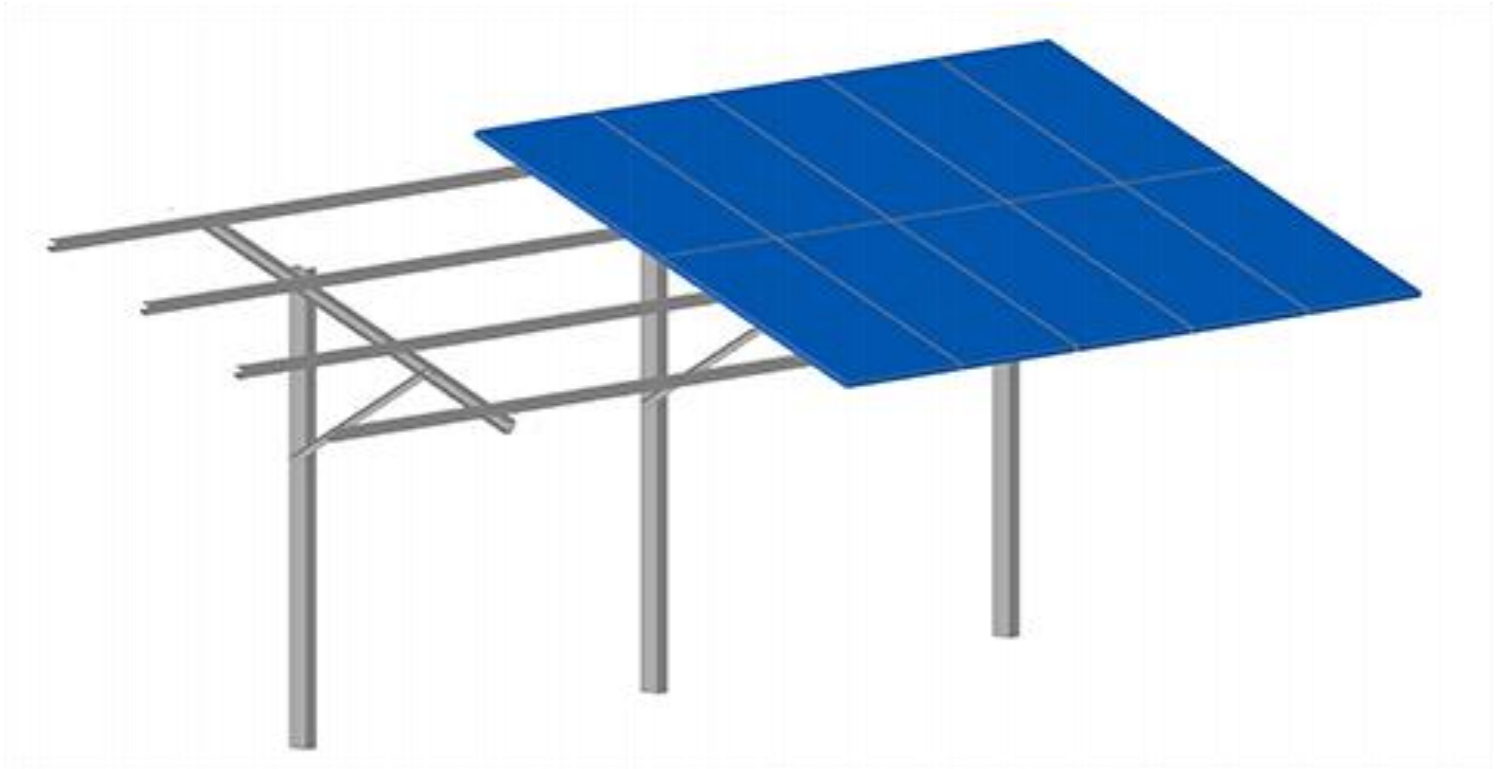
Product Datasheet

Open Land System

ISYS 1.1



Open Land System ISYS 1.1



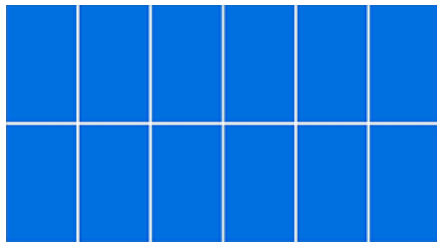
The ISYS product range has been developed by our engineers to meet the worldwide requirements of an efficient assembly system.

In addition to high quality materials and an ergonomic design, the main criterion was the range of short assembly times.

Oberhauser Bau-Systeme combines high-quality materials, well thought-out design and customer-oriented thinking to **"efficiency in detail"**.

- ✓ One-foot system – optimal for mowing and sheep
- ✓ Flexible module configuration (vertical / horizontal)
- ✓ Module inclination 0° – 30° possible - Table lengths up to 30m possible
- ✓ Quick and easy installation
- ✓ Fast module mounting with click clamps

Layout Options



System components

C-Profile 140x80x3,0-3,5



Item-Nr.:	PRSTC14080
Dimensions:	L: 140mm B: 80mm D: 3,0-3,5mm
Material:	Steel S350GD
Coating:	ZM310 – ZM1000 ZM600 – ZM1200
Unit:	1 meter

C-Profile 100x50x2,3



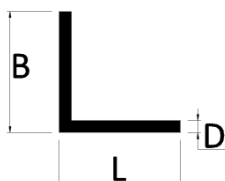
Item.-Nr.:	PRSTC10050
Dimensions:	L: 100mm B: 50mm D: 2,3mm
Material:	Steel S320GD
Coating:	ZM310 – ZM1000 ZM600 – ZM1200
Unit:	1 meter

C-Profile 75x50x2,3



Item.-Nr.:	PRSTC7550
Dimensions:	L: 75mm B: 50mm D: 2,3mm
Material:	Steel S320GD
Coating:	ZM310 – ZM1000 ZM600 – ZM1200
Unit:	1 meter

Angle Profile 50x50x5



Item.-Nr.:	PRSTW5050
Dimensions:	L: 50mm B: 50mm D: 5mm
Material:	Steel S235JR
Coating:	Galvanized
Unit:	1 meter



Middle Clamp EASY-Klick

Item.-Nr.:	529060
Dimensions:	60mm
Material:	Aluminium EN AW 6060 Stainless Steel A2
Unit:	1 pcs.



End Clamp EASY-Klick

Item.-Nr.:	5260V
Dimensions:	60mm
Material:	Aluminium EN AW 6060 Stainless Steel A2
Unit:	1 pcs.



Hexagonal Bolt M12x40 DIN933

Item.-Nr.:	81240
Dimensions:	12 x 40 mm
Material:	Stainless Steel A2
Unit:	100 pcs.



Hexagonal Nut with Serration M8 DIN 6923

Item.-Nr.:	98MS
Dimensions:	8mm
Material:	Stainless Steel A2
Unit:	100 pcs.



Washer Ø13 DIN 9021

Item.-Nr.:	89021212
Dimensions:	13mm
Material:	Stainless Steel A2
Unit:	100 pcs.

General Information

Statics



- **Optimum use of materials** tailored to the project location
- **Verifiable statics** according to Eurocode (individually calculated for each project)
- **Snow load calculation** according to **EN 1991 – 1 – 3**
- **Wind load calculation** according to **EN 1991 – 1 – 4**
- **Calculation of the loads** to determine the embedment depth

Geological Expertise



- Determination of the **soil mechanical parameters**
- **Chemical analysis** of the soil
- **Calculation of the embedment depth** of the ramming foundations
- Recommendations for foundation work in general
- Recommendation regarding corrosion protection

Corrosion Protection



- High-quality strip galvanizing according to **EN 10346**
- Coating optionally with **zinc Z600** (42 µm) – **Z1200** (85 µm)
- Coating optionally with **zinc – magnesium ZM310 – ZM1000**
- Determination of the protection period of the coating (**ISO 9223**)
- Corrosion protection in almost all soil classes
- Corrosion protection in all corrosion classes (**C1 – CX**)
- Cooperation with **Fraunhofer ISE** in the field of corrosion protection
- Additional coating options (powder coating, epoxy resin)

Guarantee



- **10 years** product warranty
- Check Oberhauser product warranty

oberhauser

Bau » Systeme

Oberhauser Bau-Systeme GmbH

Rohrbach-Bahnhof 18
84494 Niederbergkirchen

Tel.: +49 (0) 8635 69392- 0
Fax: +49 (0) 8635 69392-20

E-Mail: info@oberhauser-pv.de

