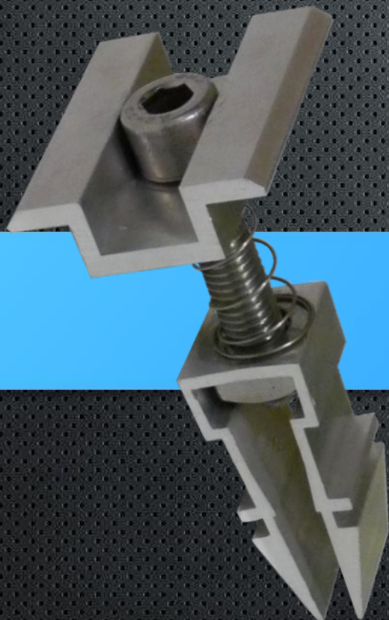




Product Datasheet

Module Clamps

Middle Clamp EASY-Klick



Item-Nr.: 529060

oberhauser
Bau » Systeme

Middle Clamp EASY-Klick



The EASY product range was developed by our engineers to meet the worldwide requirements of an efficient assembly system.

Besides high quality materials and an ergonomic design, the range of short assembly times has been considered as the main criterion.

Oberhauser Bau-Systeme combines high-quality materials, well thought-out construction and customer-oriented thinking to **"efficiency in detail"**.

- ✓ All components available separately
- ✓ High quality materials, very long shelf life cycles
- ✓ Stable construction, designed for high load
- ✓ Short assembly times, thanks to EASY system
- ✓ Universally applicable

System component



Middle Clamp EASY-Klick

Item-Nr.:	529060
Dimension:	60mm
Material:	Aluminium EN AW 6060 Stainless Steel A2
Unit:	1 pcs.

Single component



Middle Clamp Profile Alu

Item-Nr.:	519060
Dimension:	60mm
Material:	Aluminium EN AW 6060
Unit:	1 pcs.



Klick-Profile Alu

Item-Nr.:	51907MK
Dimension:	18mm
Material:	Aluminium EN AW 6060
Unit:	1 pcs.



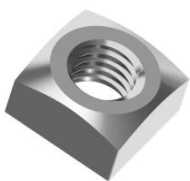
Allen Screw M8 x 45 DIN912

Item-Nr.:	8845Z
Dimension:	8 x 45 mm
Material:	Stainless Steel A2
Unit:	100 pcs.



Conical Compression Spring 14 x 0,5

Item-Nr.:	F140540
Dimension:	14 x 0,5 mm
Material:	Stainless Steel A2
Unit:	100 pcs.



Square Nut M8 DIN 557

Item-Nr.:	98MV
Dimension:	8 mm
Material:	Stainless Steel A2
Unit:	100 pcs.

oberhauser

Bau » Systeme

Oberhauser Bau-Systeme GmbH

Rohrbach-Bahnhof 18
84494 Niederbergkirchen

Tel.: +49 (0) 8635 69392- 0

Fax: +49 (0) 8635 69392-20

E-Mail: info@oberhauser-pv.de

