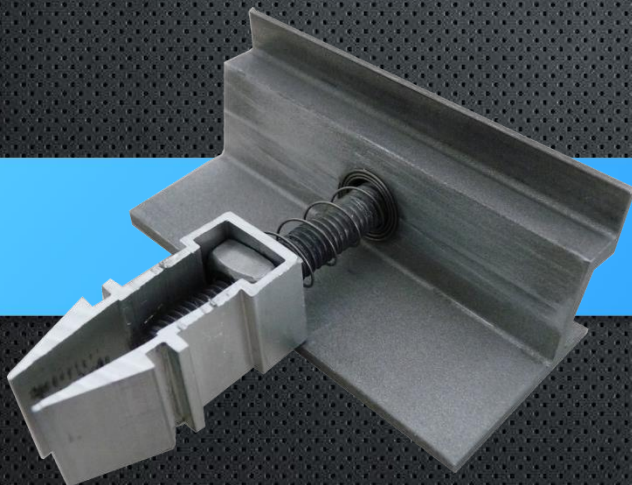




Product Datasheet

Module Clamps End Clamp EASY-Klick



Item-Nr.: 5260V

oberhauser
Bau » Systeme

End Clamp EASY-Klick



The EASY product range was developed by our engineers to meet the worldwide requirements of an efficient assembly system.

Besides high quality materials and an ergonomic design, the range of short assembly times has been considered as the main criterion.

Oberhauser Bau-Systeme combines high-quality materials, well thought-out construction and customer-oriented thinking to **"efficiency in detail"**.

- ✓ All components available separately
- ✓ High quality materials, very long shelf life cycles
- ✓ Stable construction, designed for high load
- ✓ Short assembly times, thanks to EASY system
- ✓ Universally applicable

System components



End Clamp EASY-Klick

Item-Nr.:	5260V
Dimensions:	60mm
Material:	Aluminium EN AW 6060 Stainless Steel A2
Unit:	1 pcs.

Single components



End Clamp-Profile Alu

Item-Nr.:	5160V
Dimensions:	60mm
Material:	Aluminium EN AW 6060
Unit:	1 pcs.



Klick-Profile Alu

Item -Nr.:	51907MK
Dimensions:	18mm
Material:	Aluminium EN AW 6060
Unit:	1 pcs.



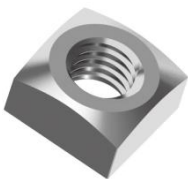
Allen Screw M8 x 45 DIN912

Item -Nr.:	8845Z
Dimensions:	8 x 45 mm
Material:	Stainless Steel A2
Unit:	100 pcs.



Conical Compression Spring 14 x 0,5

Item -Nr.:	F140540
Dimensions:	14 x 0,5 mm
Material:	Stainless Steel A2
Unit:	100 pcs.



Square Nut M8 DIN 557

Item -Nr.:	98MV
Dimensions:	8 mm
Material:	Stainless Steel A2
Unit:	100 pcs.

oberhauser

Bau » Systeme

Oberhauser Bau-Systeme GmbH

Rohrbach-Bahnhof 18
84494 Niederbergkirchen

Tel.: +49 (0) 8635 69392- 0

Fax: +49 (0) 8635 69392-20

E-Mail: info@oberhauser-pv.de

